

RFQ – Grimes Public Library Sculpture Project

Introduction

The City of Grimes, Iowa, is seeking Iowa/Midwest artists to design and install an outdoor sculpture at the Grimes Public Library Arboretum. Funded by a BRAVO of Greater Des Moines grant, this initiative aims to enhance our community's cultural and artistic landscape while celebrating our natural environment, heritage and history.

The City of Grimes opened a new public library building in January 2024. In September the City began construction of a public amphitheater on the east part of the library property. The City's Public Works and Library Departments are now working together to complete the west side of the property with an accessible, educational, and recreational arboretum and performance space. The public library was designed with numerous natural elements including large windows overlooking the grounds, a treehouse playscape, and a large prairie inspired sculpture presiding over the lobby. The construction of the arboretum will allow these natural elements to seamlessly blend with the outdoors to further enhance the experience of visitors. The arboretum will boast a performance space to feature musicians and library programming, as well as a general space for visitors to relax. There will be six sculptures throughout the project featuring natural elements through an artistic lens.

A 2021 City Strategic Plan established that a tree farm and/or arboretum should be established within the City of Grimes. The Public Works Director and the Public Library Director were authorized to collaborate and begin planning for this space. Many different locations were discussed and evaluated, but the most accessible and widely used space by the community was determined to be the new library property. Established trail connections, widened roadways, and refinished sidewalks allow this space to be accessible to all parts of Grimes, and the new state-of-the-art library attracts visitors not only from the community, but the Des Moines Metro and the state of Iowa. On site levelling, drainage, and an initial tree planting were done with the construction of the library, preparing the site for development of the arboretum. Establishing another public social space on the library property was the best fit for this venue and its featured sculptures.

Construction for the Grimes Public Library Arboretum will begin in the Spring of 2025. The entire project will consist of around half of an acre and be adjacent to the Grimes Public Library. Renderings and scale have been provided by Shive Hattery in the images attached to this document. The sculpture garden is highlighted by a yellow border and the pink asterisks indicate the planned locations of the sculptures within the arboretum.

The arboretum will feature: whimsically crushed stone pathways guiding visitors throughout the arboretum and connecting to existing sidewalks; two wood pavilions created from locally sourced wood (18' x 22' and 16' x 20'); natural cut stone benches (2' x 6'); native prairie grasses; a wetland mix; 38 overstory native trees; and 28 understory native trees, with 24 additional trees planted in 2026.

Eligibility

This RFQ is open to artists based in Iowa or the Midwest region with a demonstrated ability to execute large-scale, public art projects. Employees of the City of Grimes and board members for the City of Grimes and BRAVO are ineligible to apply.

Commission Description

The City of Grimes will award a stipend of \$1,000 for each finalist selected. The committee will select up to six different artists for the BRAVO of Greater Des Moines grant.

The BRAVO grant will be divided amongst the three artists that will be selected. Awards will range from \$15,000 to \$30,000. The budget includes, but is not limited to, design fee, travel, fabrication, any proposed site alterations, supplies, material costs, delivery, approval by an Iowa-licensed engineer, installation, and three-year workmanship warranty pertaining to any defects. Artists will be consulted in the site location. Sculpture pads and footings will be paid for by the library and should not be considered part of the budget. Pads are designed as an 8' x 8' pad. However, this can be negotiated based on the proposed artwork, if necessary.

Selection Process

A selection panel consisting of city and community stakeholders will select and award up to six different artists.

Submission Materials and Instructions:

- Artist contact information: email, phone number, address, website, and social media if applicable.
- A written letter of interest describing your vision for the sculpture and installation. The letter of interest may not exceed two pages.
- A relevant body of work that demonstrates conceptual, aesthetic, and technical mastery in the artistic medium/media relevant to your proposal. Include up to five images and/or three video links. Links to images are also acceptable.
- A list providing details of your selected body of artworks, including the title, year, materials, dimensions, and brief budget.
- Biographical information and resume/CV. If there is an artist team, please provide biographical information and resume/CV for all team members.
- The contact information of three professional references.
- Please submit all materials via email to cheid@grimesiowa.gov.

Evaluation criteria:

- Works of art in the artist's portfolio are original, innovative, of exceptional quality and enduring value.
- Works of art in the artist's portfolio indicate that the artist is sensitive to the social, economic, cultural, political, historical, environmental, and physical context of the site, the City of Grimes, the Grimes Public Library, and the surrounding communities, and the State of Iowa. We are committed to sustaining a diverse and inclusive community.

- Works of art in the artist's portfolio that reflect natural design elements.
- Works of art in the artist's portfolio utilize materials and processes likely to contribute to the longevity of public works of art.

Up to 6 finalists will be chosen to create a concept provided with a \$1,000 design fee.

Submission Details and Timeline

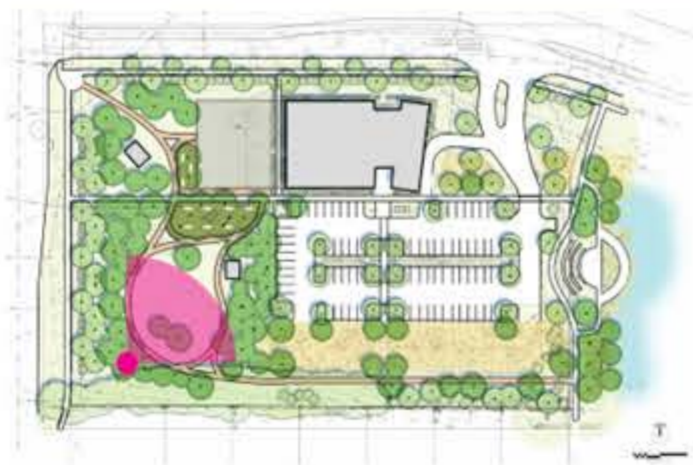
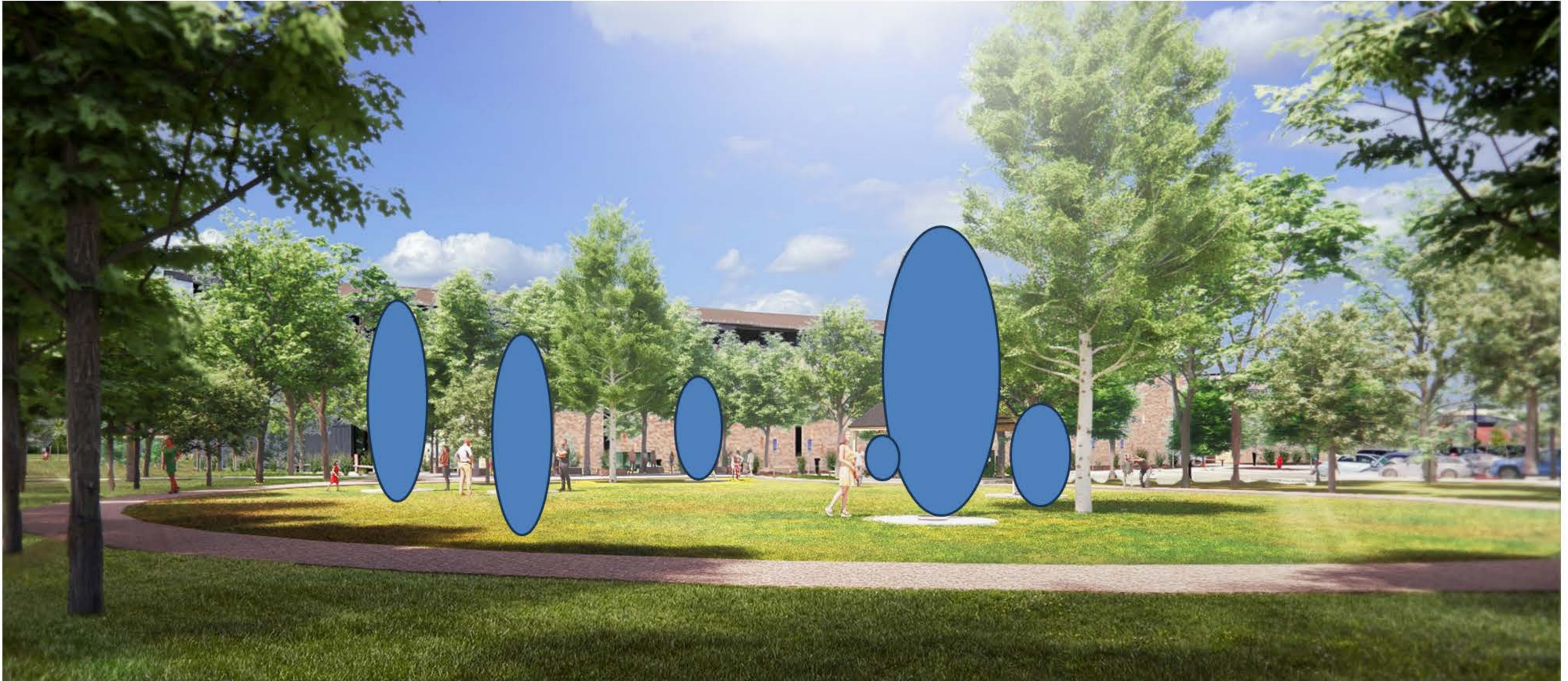
- There is no cost to submit.
- Completed proposals must be submitted by 12:00pm on April 3, 2025.
- Finalists will be notified by April 14, 2025.
- Selection announcement on June 3, 2025.
- Confirmation of an artist's intent to proceed with the project must be confirmed by June 5, 2025.
- Installation fall of 2025.


Contact Information

For questions or to submit proposals, contact:

Cheryl Heid
Director of Grimes Public Library
City of Grimes
200 NE Beaverbrooke Blvd, Grimes, IA 50111
cheid@grimesiowa.gov
515-986-3551

We look forward to receiving your proposals and enhancing the cultural vibrancy of our community together!



 Blue Circles indicate possible locations of sculptures

CITY OF GRIMES - LIBRARY ARBORETUM

Perspective 1
200 NE Beaverbrooke Blvd, Grimes, IA 50111
August 30th, 2024



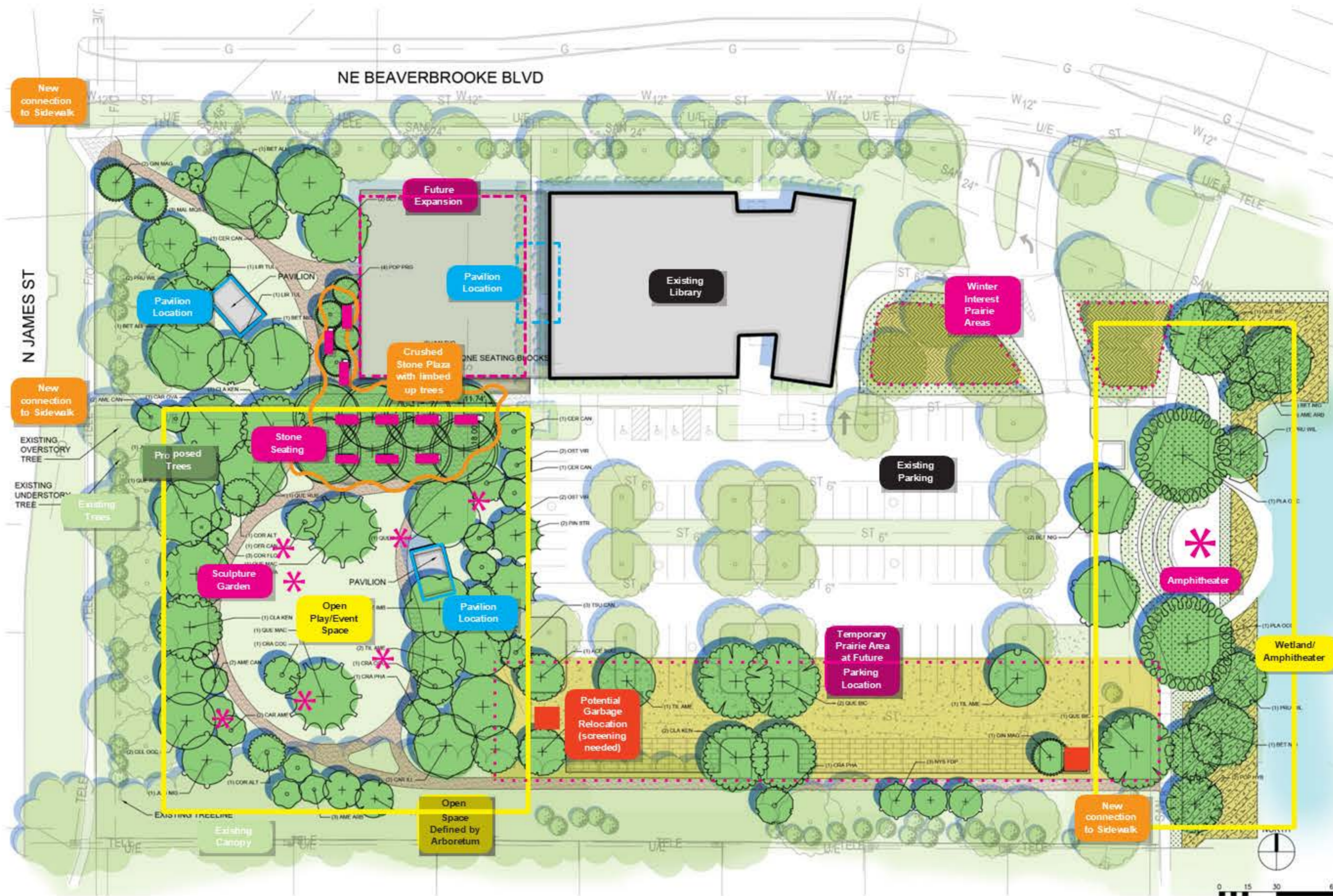


CITY OF GRIMES - LIBRARY ARBORETUM

Perspective 2

200 NE Beaverbrooke Blvd, Grimes, IA 50111

August 30th, 2024



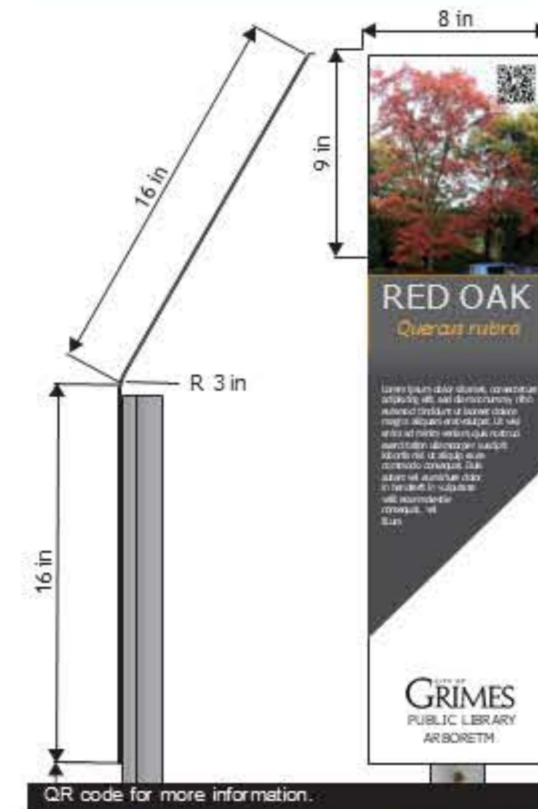
- Arboretum feels self-contained; Trees form a boundary around lawn area for a sense of enclosure.
- Smaller pavilions provide respite and reflection along the north and south areas of the arboretum.
- The open space can be a sculpture park and event area.
- Sculptures can be a series of kinetic/windmill style exhibits.
- Prairie seed can be used as temporary groundcover prior to parking lot expansion.
- Prairie can help connect the West Arboretum to the East wetland grasses.
- Wetland species can be heavily planted at the amphitheater to bookend the arboretum.
- Prairie mixes near driveway selected for structure and winter interest.
- Pervious pavers in the parking lot can serve as educational opportunity along pathway and manage stormwater.
- Natural stone seating areas in crushed stone plaza.



Prairie Seed Mix for Winter Interest



Sculptural windmills



QR code for more information.



Natural stone seating



Tree community with large scale crushed stone plaza and seating

CITY OF GRIMES - LIBRARY ARBORETUM

SCHEMATIC ALTERNATIVE - 3

200 NE Beaverbrooke Blvd, Grimes, IA 50111

August 30th, 2024