

Grimes business Dist. 1904
 From Ins. Map. 1/2/05
 P-Pressley building
 Mc-McClain building
 J-Jeffrey building

1-City Jail
 2-Elect. Light

Black
 Smith

S T E W A R T

(2)-Two story
 building

Mc. (2)
 Gen.
 Mdse.

*-Not To
 Scale

Implement

D-Dwelling
 W-Water

Bank Bldg.

(2)
 Hardware
 (2)
 Bank

Drug S. Bldg.

Drug
 (2)

IOOF Bldg.-

(2)
 Gen.
 Mdse.
 (2)
 Meat
 Rend.

D.

(-hoë 3)-J. P.O.

W A L K E R

This Bldg.
 was divided
 & S ½ used
 for P.O. for
 years.

Store
 (Vac)

Tel.

1 9 0 4

B U S I N E S S

D I S T .

O F G R I M E S

(Now-S. 2nd)

P. Gro.

Barb.

Mill.
 &
 Notions

Flour

Wagon
 Shop

Hotel

Livery

1

2

W.

D.

1944 Main Street (John St.)

D.

(now S. 3rd)

(2)
 Gen.
 Mdse.

Pres.
 Ch.

J
 O
 H
 N

S
 T

n

o

w

M

A

I

N

S

T

N

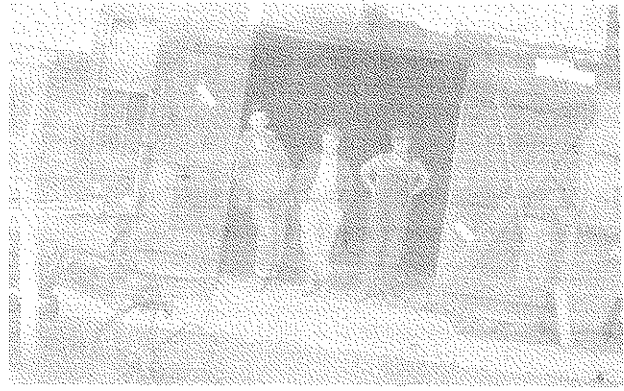
W

S

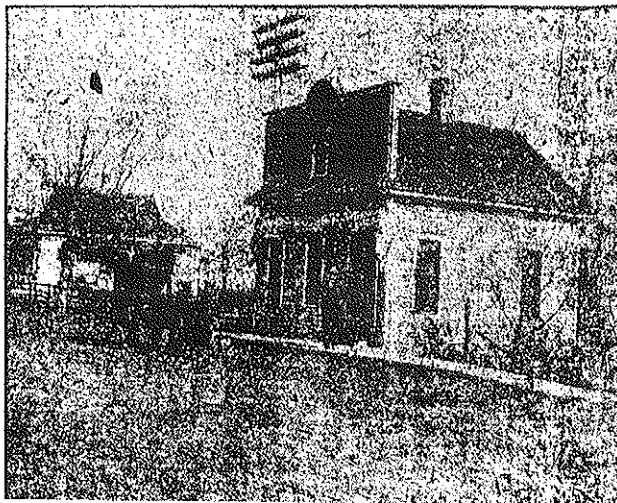
E



Second Telephone Office, SE corner of Main and S. 2nd



Blacksmith shop located where Bankers Trust is now located.



Original Telephone building located where the present building is now located. We realize it is a poor picture but the only one we could secure.



Implement and Plumbing in the picture is that of G. Grimm and F. Briggs. This store was located next to our present Grimes Hardware.



The Blacksmith Bob Shiffer. The blacksmith building stood where the bank is today.



Mable Baer worked in the Drug store



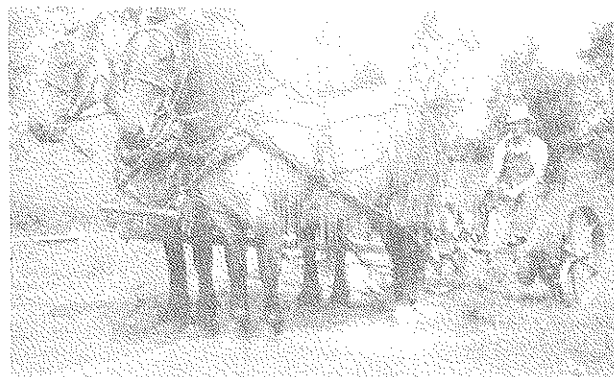
Note on East side of street, first fire station next to original telephone building. Bobby Shiffer by Dick's Garage.



Cars and fashions change. They are Esther Briggs, George Graham, Hazel Briggs, Fred Howe.



The store space in the south section of the I.O.O.F. building, at this time was used as a restaurant.



John Bohrofen, farming changed.



1936 snow storm the store where the Open Bible Church now stands. This building was used for a number of businesses. The Post Office was to the far end of the building on Main Street.



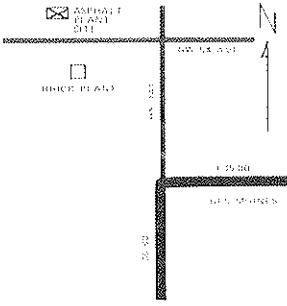
Post office when located in building SW of corner at S. 3rd and Main. The lady is Mrs. Alma Ewing. Note Old Hotel and the present Library building.

B. Business


1. Asphalt: Grimes newest industry, located 12021 on N. W. 54th Ave.

Congratulations Grimes on your 100 Years

From Grimes Newest Industry




GRIMES ASPHALT PLANT LOCATION



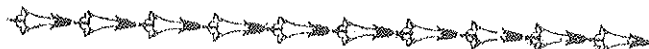
Grimes Asphalt

<p>PLANT</p> <p>12021 N. W. 54th Avenue Grimes, Iowa Phone 515-986-4241</p>	<p>OFFICE MAILING ADDRESS</p> <p>4804 University Avenue Des Moines, Iowa 50311 Phone 515-255-3109</p>
--	--

Yonker Construction Co., Owner



2. Auto: We had a Ford dealership here in Grimes in 1920, then Dick Kohls had the Plymouth Agency 1928 and dropped it after he came back from W. W.-II.


Grimes Record - June 7, 1917

Ford

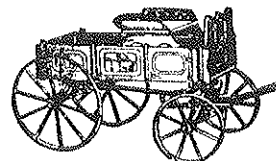
Touring Car \$360, Runabout \$345, Coupelet \$505, Town Car \$595, Sedan \$645—all f. o. b. Detroit. Remember, Ford owners drive their cars all the year around.

Grimes Motor Co.



3. Bank: W. J. Stewart started a bank here in Grimes around 1900. In 1906 the bank was incorporated and called, Grimes Savings Bank, with W. J. Stewart president, C. L. Weiser vice president and A. B. Shawver cashier, they had assets of over \$96,000. After the bank holiday the Highland Park State Bank took over the assets of the Grimes bank. That same year the Highland Park bank moved to downtown Des Moines and the name was changed to Des Moines Bank and Trust bank then in 1961 the Bankers Trust took over this bank and it included the Grimes Bank. Mel Marsh was a vice president at the Bankers Trust and came here from 1961-1979, then a vice president, Don Rainer, came and is in charge of the Grimes office.

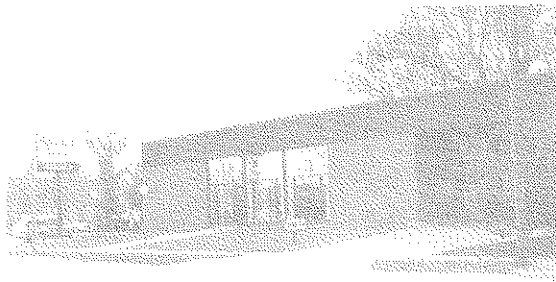
The Farmers Bank was started in 1906 with assets over \$55,000, Pres. A. M. Allen, Vice-Pres. Peter Bohrofen, J. P. Black cashier. The bank closed before 1930.



Congratulations Grimes

On Your Centennial 1881-1981

1954 Assets - \$916,394.00
 1979 Assets - \$8,092,315.00
 Goal 1980 Assets - \$10,000,000.00
 Depositors 1980 - over 1,000

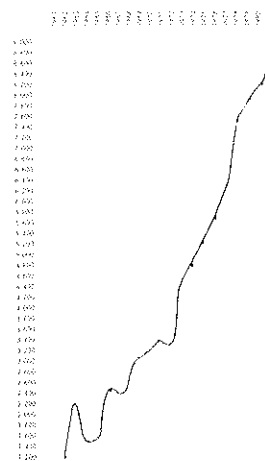


Bankers Trust

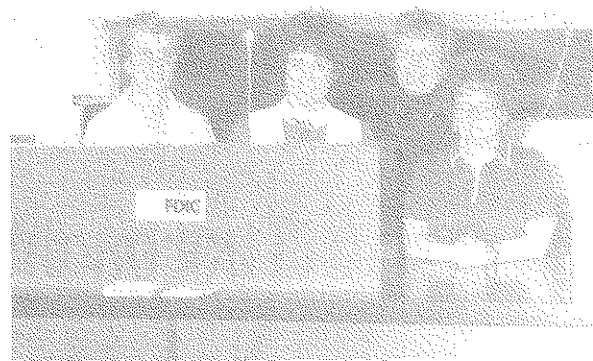
Come Grow With Us

Grimes, Iowa 50111
 Member, FDIC

Total Growth



Don Rainer and Donna Grantham



Left to Right, Marjorie Young, Luci Fay,
 Connie Condon and Phyllis Forneris

Deposited in
Farmers Savings Bank

GRIMES, IOWA

By

Mr John Swanson
Feb 12 - 1912 191

PLEASE LIST EACH CHECK SEPARATELY

Currency

Gold

Silver

Checks

<i>Mary McInroy</i>	<i>18</i>
<i>Julia Kym</i>	<i>5</i>
<i>J. G. Ward</i>	<i>17 32</i>
	<i>40 32</i>
<i>Cash</i>	<i>5</i>
	<i>35 32</i>
<i>Dr. J. G. Ward</i>	

Total \$

SEE THAT ALL CHECKS AND DRAFTS ARE ENDORSED

GRIMES IOWA *June 20* 1911

FARMERS SAVINGS BANK

PAY TO THE ORDER OF

John Swanson
4 00
4 00 DOLLARS.

WESTERN PTG. & LITH. CO. IOWA



PINE HILL FARM

Three miles south-west of Grimes, Polk County, Iowa.

J. C. BRIGGS,

Breeder of

Thoroughbred Hereford Cattle.

Grimes, Ia., 18

4. Barber: The first barber in Grimes was Sam. Hines then Theo. Morris, by the turn of the century our barbers were W. E. Render, and J. W. Hales "tonsorial and bath parlor". At one time we had 5 barbers working in Grimes. Around 1920 came F. C. Clement, with Charles Fletchall coming in 1937-1975. Vic Mitchell opened up his shop in 1975, and now Luanna Sutton has her shop in the old bank building.

The first one to have a beauty shop in Grimes was Jessie May Perdue in the 1930's then Eleanor Howe started her shop in 1950. Sue Blackman opened up her shop in the 1970's.



Frank Briggs and Charles F., 1956



Charles Fletchall Barber Shop. Mr. Harman is customer. Bert Baer and Francis Broderick waiting. The little girl is Mr. Harman's granddaughter. The shop was located in frame building where Telephone building is now located.



Eleanor and her Beauty Shop

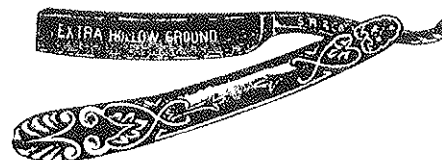
Congratulations

to Grimes



Eleanor's Beauty Shop

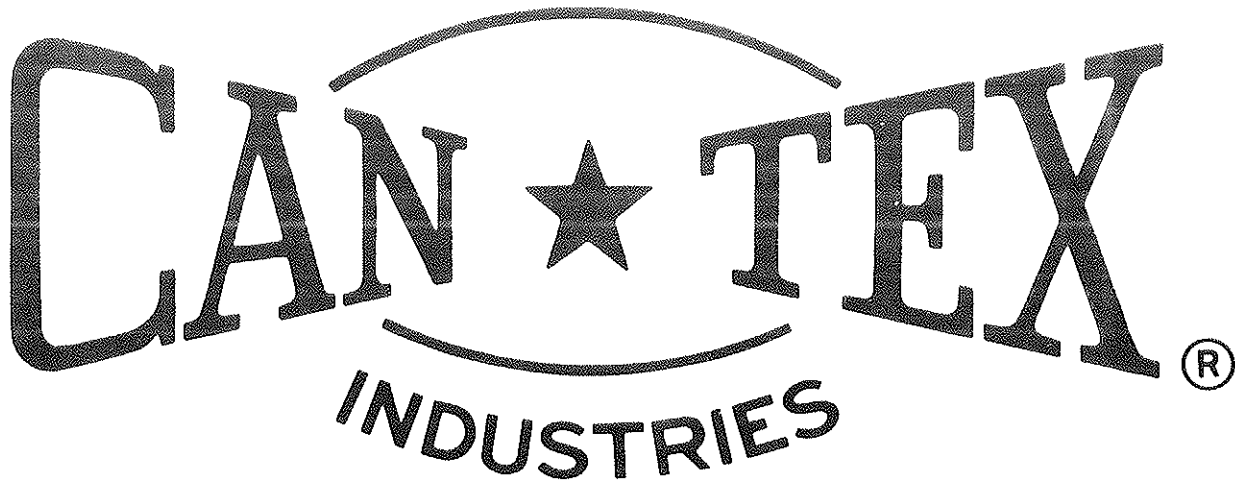
986-3637 • 509 S. 2nd, Grimes



5. Blacksmith: Our first shop was opened by C. W. Reed who moved here from somewhere in Iowa in 1881. Later he developed his business into a machine shop. Soon Youngerman around W. W. II this (building) stood until the 1940's when it was rased.

6. Can-Tex is one of our newest industries making tile etc. whose manager is a resident of Grimes, Jim Evans.

Congratulations Grimes on 100 Years of Progress

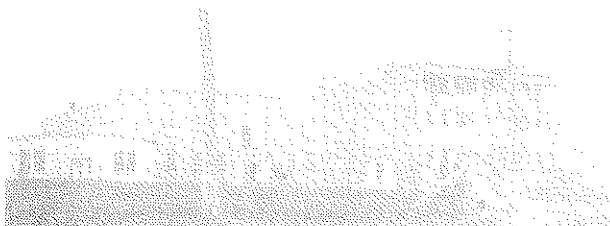


A DIVISION OF **harsco** CORPORATION

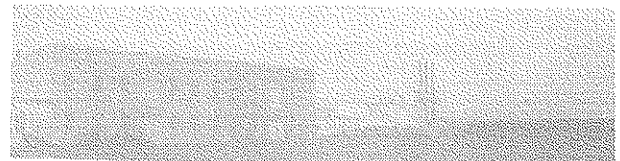
Grimes, Iowa

986-3655

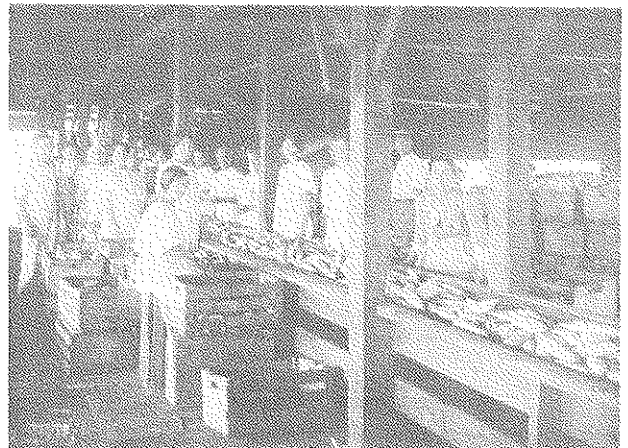
7. **Canning Factory:** They first started in 1902, by 1906 the factory was on its way to becoming well established. We asked Fred Wright to write and he writes, "The original name was Grimes Canning and Preserving Co. At some date between 1910-1915 the name Preserving was dropped and the name became Grimes Canning Company. About 1922-1923 the name was changed to The Grimes Canning Corporation, and in 1937 it became known as Beaver Valley Canning Company. Corn, Tomatoes, Pumpkin, Chicken, Pork & Beans, Lima Beans, Pinto Beans, Red Beans, Dog Food, Fruit Drink and Liquid Sugar are the items they can. The Grimes company also had a plant at Perry, Pella and Altoona." Fred was employed a total of 51 years at the Canning Factory. George Stewart was the first manager. The "Old Grimes" Poem was written by A. G. Green, who was born Feb. 1802, in R. I., the poem was written around 1840.



The 3 story building built on site of original building



The original building built in 1902 to the right and two additions built in 1903 and 1905.



Sorting table note boxes of corn



Canning Factory in 1902

Congratulations

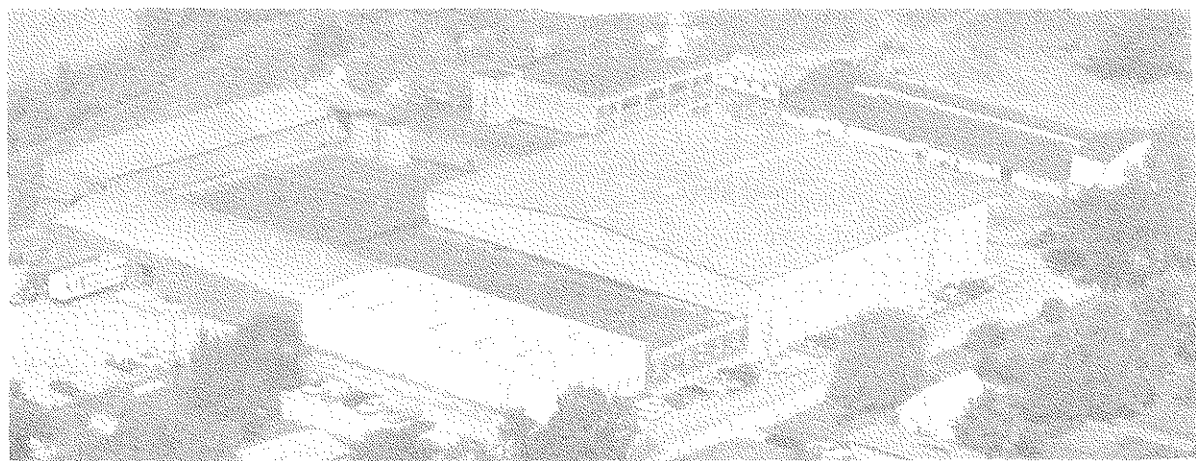
to Grimes and Our Community

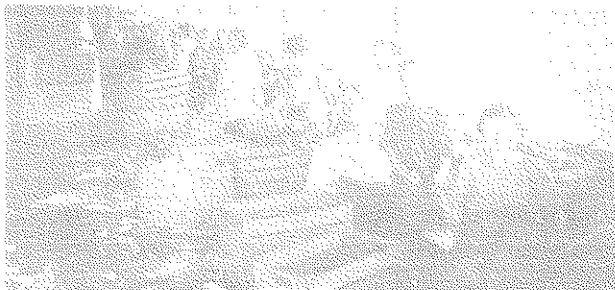
We share 78 years of our 100 years rich heritage



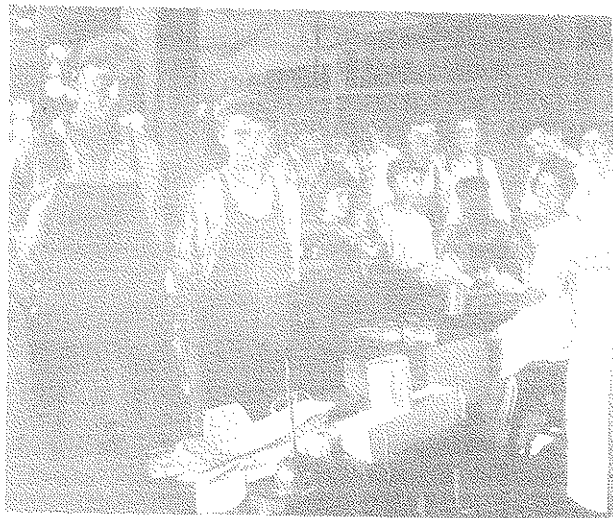
Beaver Valley Canning Co.

Grimes, Iowa





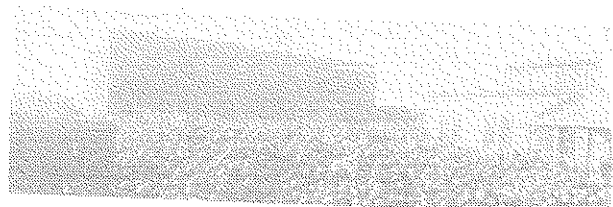
Shucking corn by hand paid by the bushel, 5 cents



Labeling by hand



Jessie Bohrofen first and Sarah Hammond second on closing machine.



Pumpkin canning before 3 story building was erected

Wm. H. Reed Grimes, Iowa, *Nov 30* 1904

Cr. by 17474 lbs. Corn @ 12.00 per ton 104.84
 Cr. by 141741 lbs. Corn @ 10.00 per ton 709.70
 Cr. by 2 lbs. Pumpkins @ 2 per ton 2

Total Credits

Dr. to 238 lbs. Seed Corn @ 6.00 per cwt 14.28
 Dr. to Cases Corn @ per case
 Dr. to Cases Pumpkins @ per c's

Total Debits

Amount of Check

Grimes Canning & Preserving Co.

\$ 814.54

14.48
\$ 800.06